

Chita-nanbu Regional Environmental Center (in Taketoyo Town) will start operation from April 2022.
Consequently, changes will be made to the disposal method for combustible (burnable) waste and some oversized trash.

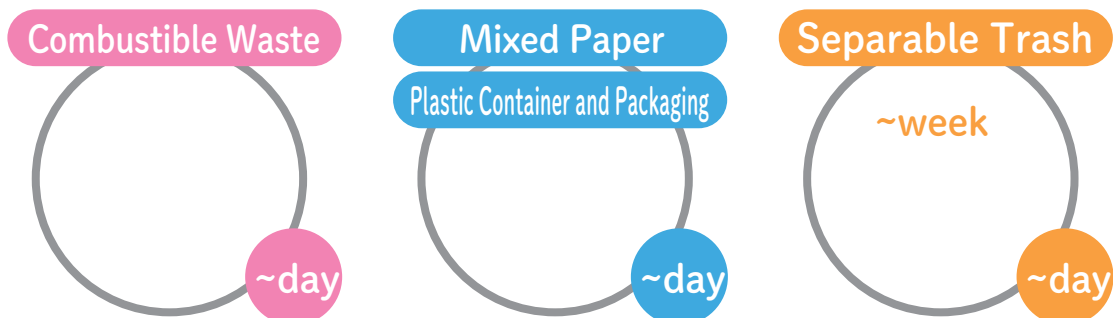
April 2022~
Household
Edition

Do your part, sort your trash.

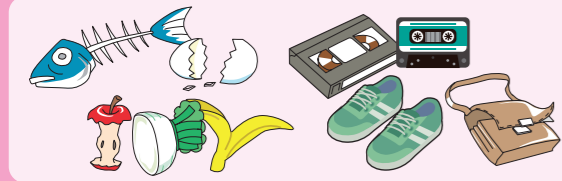
How to Sort or Dispose of Waste & Recyclable BOOK



Keep track of the collection days for your area
by writing them down below!



Waste Disposal Rules



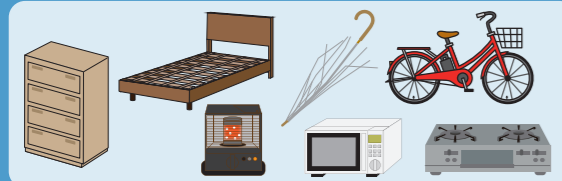
▶ Combustible (burnable) Waste - Page 9



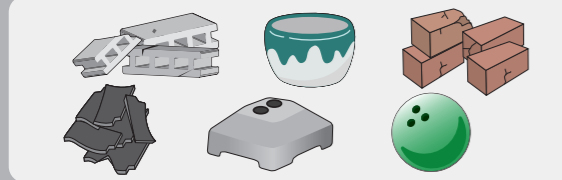
▶ Mixed Paper - Page 10
▶ Plastic Container and Packaging - Page 11



▶ Oversized Combustible (burnable)/
Incombustible (non-burnable) Trash - Page 12



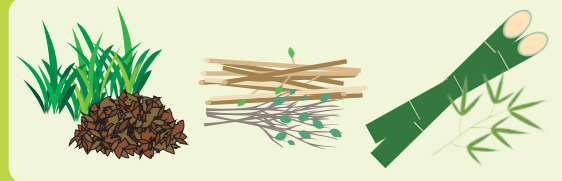
▶ Oversized Wooden Item/Recyclable - Page 13



▶ Landfill Waste - Page 14

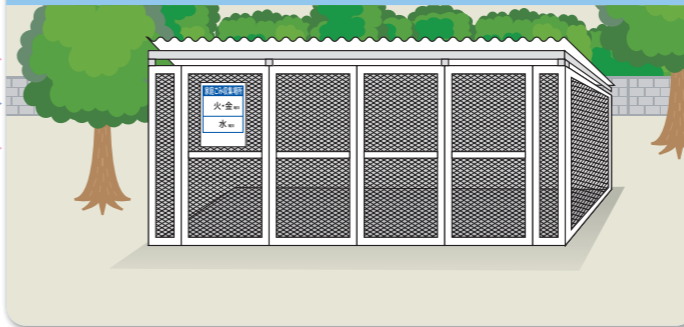


▶ Recyclable Waste - Page 15 ~ 16

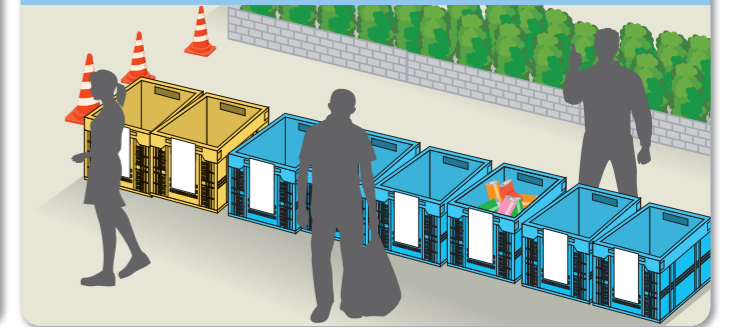


▶ Grass/Pruned Branch/Bamboo - Page 17

Waste Collection Site in Each Area - Page 3



Sorting Site in Each Area - Page 4



Chita-nanbu Regional
Environment Association

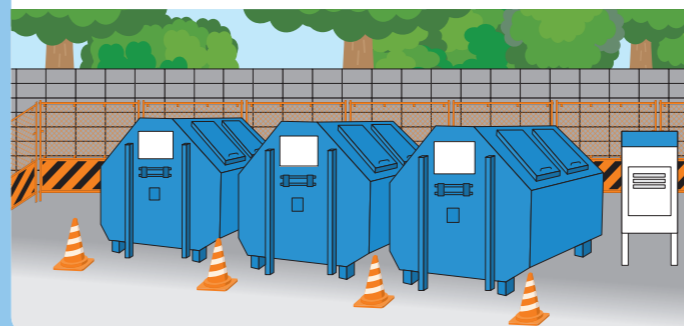
Handling Fee:
100 yen per 10 kg

Chita-nanbu
Clean Center
(Self Drop Off)

Chita-nanbu Hygiene Association

Handling Fee:
100 yen per 10 kg

Transfer Station (Chita-nanbu Regional Environment Association) - Page 5



Interim Storage Facility (Chita-nanbu Hygiene Association) - Page 6



Chita-nanbu Recycling Station - Page 7 ~ 8



知多南都リサイクルステーション
【入場できる資源ごみ】
● 分別ごみ (資源ごみ・不燃物)
● 草・剪定枝・竹
● ミックスペーパー
● プラスチック製容器包装



*Please refer to your town's newsletter for information such as the waste collection days for your area.
 *Please refer to each corresponding page for details such as the disposal method.

Combustible Waste

Items accepted at the waste collection site in each area

See page 9 for more details

Kitchen Scraps (food leftovers, shells, etc.)



Footwear, Bags



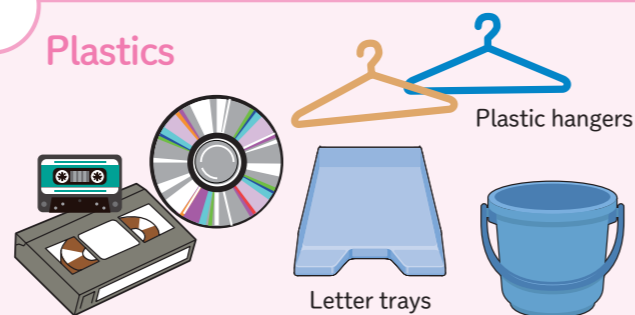
Grass, Pruned Branches, Bamboos, etc.

Designated trash bags household combustible waste

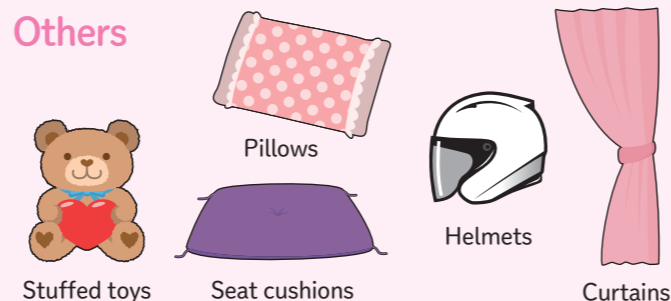
Designated trash bags household combustible waste (45 liters)



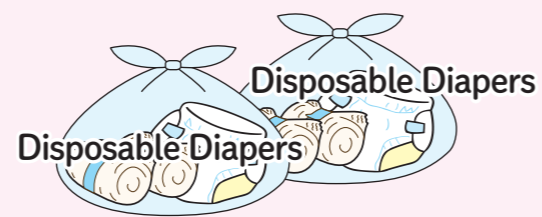
Plastics



Others



Disposable Diapers



Mixed Paper

Items accepted at the waste collection site in each area

See page 10 for more details



Plastic Container and Packaging

Items accepted at the sorting site in each area

See page 11 for more details



Recyclable

Items accepted at the sorting site in each area

See pages 15 and 16 for more details

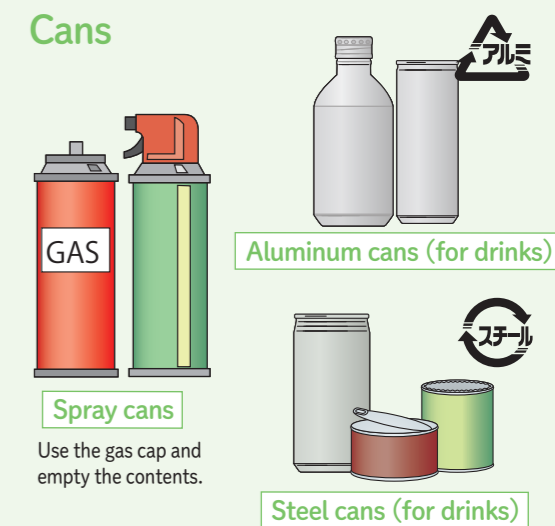
Bottles (for drinks, cosmetics)



Papers, Fabrics



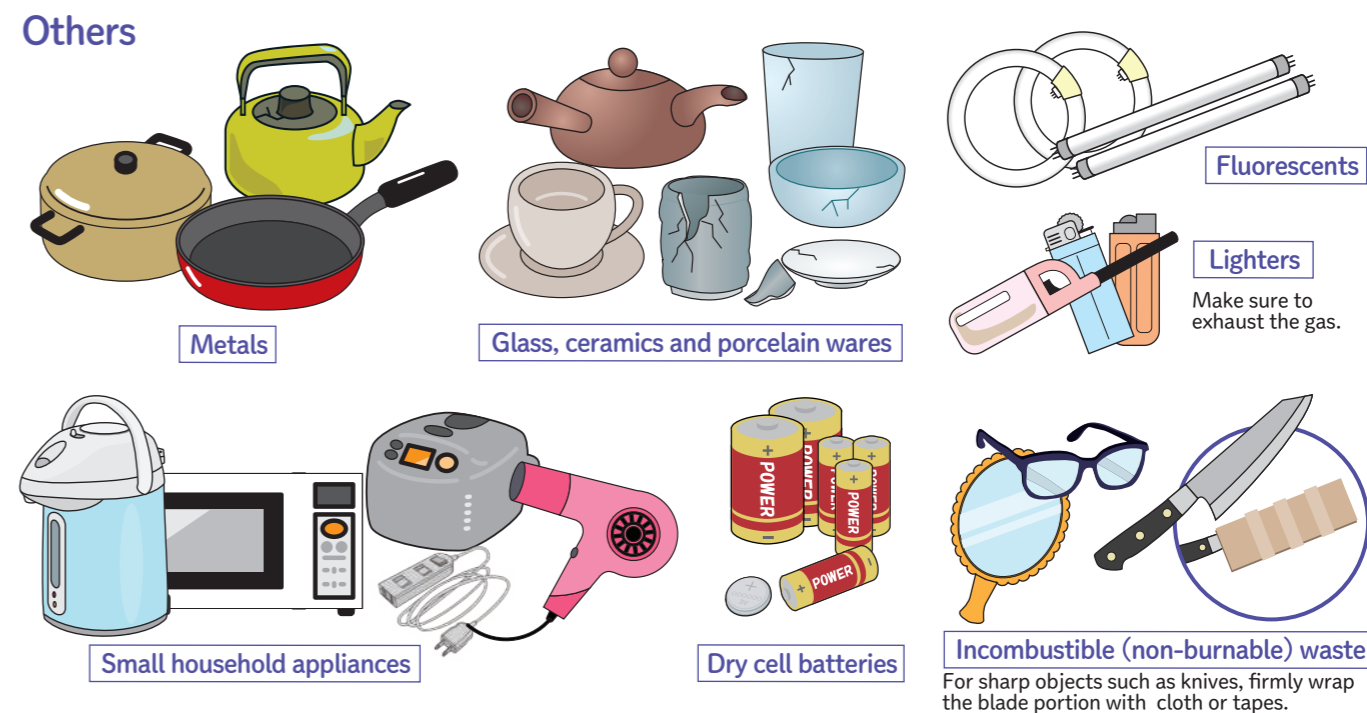
Cans



Plastic Bottles (for drinks)



Others



Chita-nanbu Regional Environment Association - Transfer Station

[within Chita-nanbu Clean Center]

Combustible Waste

Oversized Combustible (burnable)/Incombustible (non-burnable) Trash

Tel: 0569-84-1007

(contact information for the Chita-nanbu Regional Environment Association in Taketoyo Town)

Combustible Waste

See page 9 for more details

Kitchen Scraps (food leftovers, shells, etc.)

Plastics

Plastic hangers
Letter trays

Footwear, Bags

Sneakers, boots, etc.
Shoulder bags, school satchels, etc.

Others

Stuffed toys
Helmets
Curtains

Grass, Pruned Branches, Bamboos, etc.

Designated trash bags household combustible waste (45 liters)

Disposable Diapers

Chita-nanbu Hygiene Association - Interim Storage Facility

[within Chita-nanbu Clean Center]

Oversized Wooden Item/Oversized Recyclable

Landfill Waste

Tel: 0569-62-0402

Oversized Wooden Item/Oversized Recyclable

See page 13 for more details

Bedframes
Wooden tables
Wooden dressers
Wooden bookshelves
Gas stoves
Kerosene heaters
Vacuum cleaners
Umbrellas
Bicycles

Landfill Waste

See page 14 for more details

*Large quantity is not accepted.

Concrete blocks
Roof tiles
Bricks
Bowling balls
Pole bases
Earthenwares

Oversized Combustible (burnable) Incombustible (non-burnable) Trash

See page 12 for more details

Futons (bedding)
Tatami (floor mat)
Carpets
Sofas, seat cushions
Guitars

Chita-nanbu Clean Center

Location: 1-77, Kashinoki, Utsumi, Minamichita

Drop off hours

Monday ~ Friday (including public holidays) 8:45 a.m. - 12:00 p.m.
1:00 p.m. - 4:15 p.m.
2nd and 4th Saturday (including public holidays) 8:45 a.m. - 12:00 p.m.

- A handling fee is required and the amount is calculated based on the drop off quantity. (anything less than 10 kg will be rounded up to 10 kg).
- Payment is to be made **in cash only** and **on the same day**.
- Payment for the Transfer Station and Interim Storage facility is **calculated separately**. (In case of combined drop-off, weighing and payment will be done twice).
- **Recyclables are not accepted at the Chita-nanbu Clean Center.** Please bring it over to the Chita-nanbu Recycling Station.

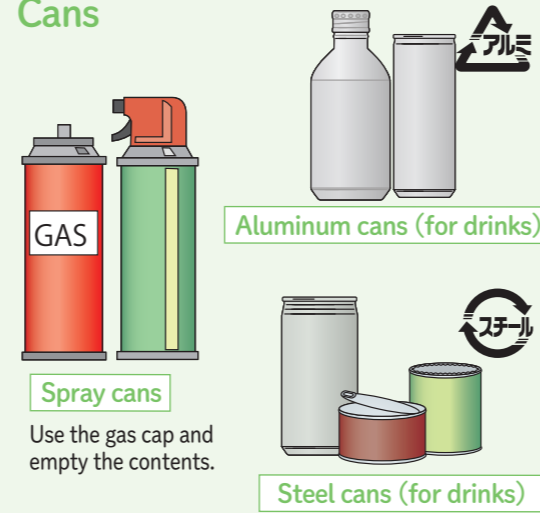
Recyclable

See pages 15 and 16 for more details

Bottles (for drinks, cosmetics)



Cans



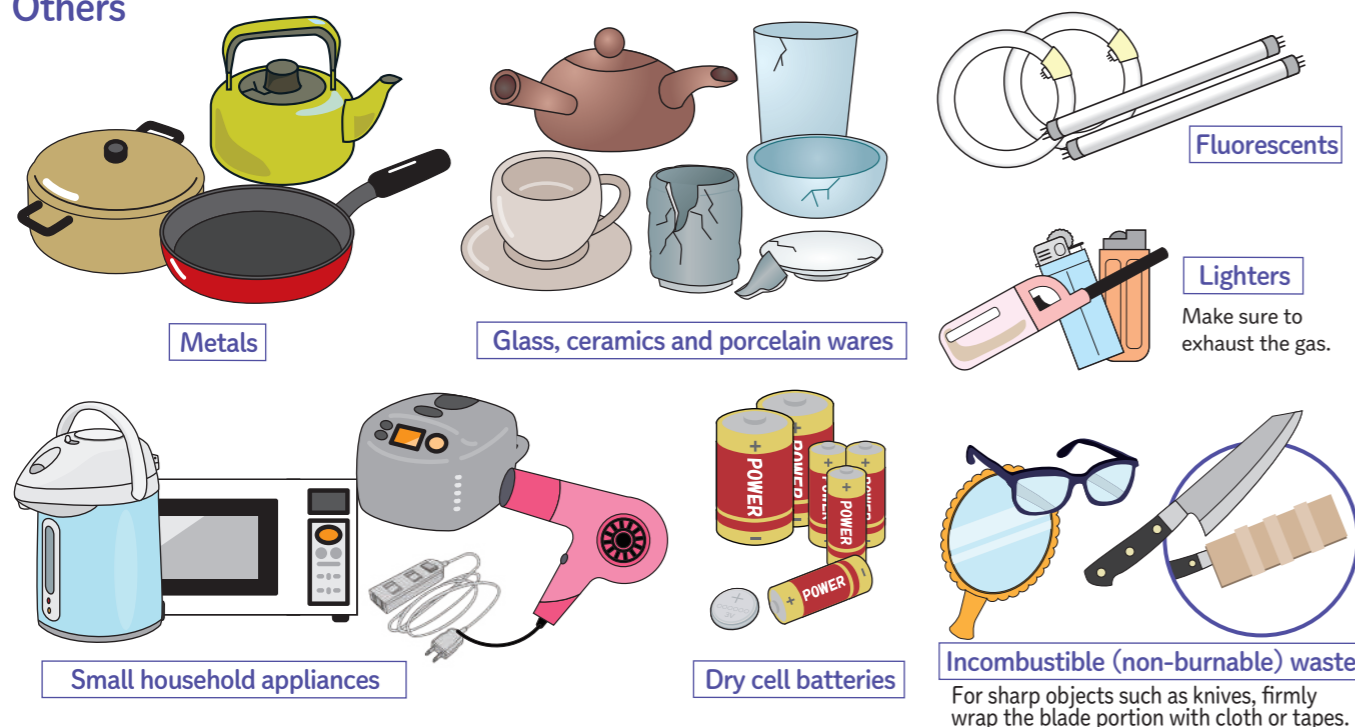
Papers, Fabrics



Plastic Bottles (for drinks)

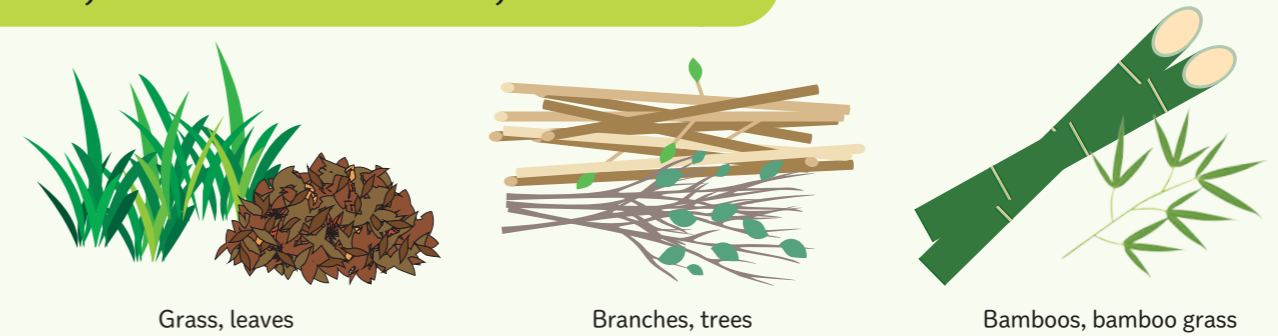


Others



Grass, Pruned Branches, Bamboos

See page 17 for more details



Mixed Papers

See page 10 for more details



Plastic containers and packaging

See page 11 for more details



Chita-nanbu Recycling Station

Location: 17, Ikeda, Utsumi, Minamichita

Drop off hours

Monday ~ Friday (including public holidays)
8:45 a.m. - 12:00 p.m. 1:00 p.m. - 4:15 p.m.

2nd and 4th Saturday (including public holidays)
8:45 a.m. - 12:00 p.m.



Combustible (burnable) Waste

Accepted locations

Waste Collection Site in Each Area

Chita-nanbu Clean Center (Transfer Station)

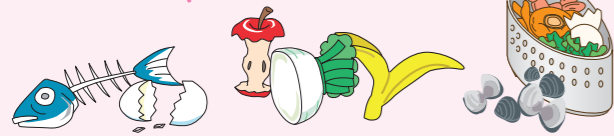
Chita-nanbu Regional Environmental Center

Rules

Waste Collection Site in Each Area - Page 3

Chita-nanbu Clean Center (Transfer Station) - Page 5

Kitchen Scraps (food leftovers, shells, etc.)



- Food scraps should be composted as much as possible.
- Liquid should be drained and the bag securely tied.
- Edible oil should only be disposed of during the waste oil collection period. (If the amount is minimal, you may dispose of it as combustible (burnable) waste after either soaking it up with a paper/cloth or coagulating it with oil solidifiers).

Footwear, Bags



- Remove any metal parts as much as possible and dispose of them at the sorting site in the other (metals) bin.

Grass, Pruned Branches, Bamboos, etc.



- When disposing of grass and leaves as combustible (burnable) waste, please contain it within the town's designated trash bag.
- Pruned branches and bamboos should be chopped to match the sizes stated above and bundled using the town's designated trash bag (45 liters).
- There will be **no handling fee** if it is taken directly to the Chita-nanbu Recycling Station. Also, containing within a trash bag is not necessary in this case.

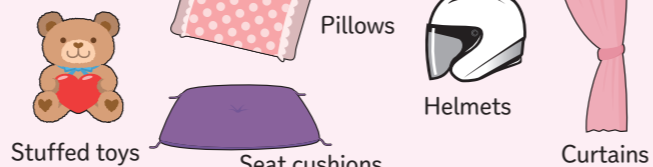
See page 17 for more details

Plastics



- Non-plastic containers and packaging should be disposed of as combustible (burnable) waste.
- Items that are too large to fit into the town's designated trash bags should be treated as **oversized waste**.

Others



- If it fits into the town's designated trash bag, items such as futons (bedding) can also be disposed of as combustible (burnable) waste at your area's waste collection site. (If the item does not fit into the town's designated trash bag, it should be treated as an **oversized combustible (burnable) trash**).

Disposable Diapers



- Disposable adult or baby diapers should be contained within transparent or semi-transparent bags, **with an indication written** and disposed of at your area's collection site.
- Former town's designated trash bags (green for Mihama Town and yellow for Minamichita Town) should not be used.
- ***Pet diapers do not fall into this category.**
- ***There will be a handling fee of 100 yen for every 10 kg if it is taken directly to the Transfer Station or the Regional Environment Center.**

- When disposing at your area's collection site (excluding disposable diapers), please **make sure to use the town's designated trash bag (combustible (burnable) waste)**.
- Although it is not necessary to use the town's designated trash bag (combustible (burnable) waste) if taken directly to either the Chita-nanbu Clean Center (Transfer Station) or the Chita-nanbu Regional Environmental Center, if the waste **produces a strong odor** or is **easily scattered**, please contain it within a bag. Please use either a transparent or semi-transparent bag to ensure that the contents are visible.
- For more information, please contact the Chita-nanbu Regional Environment Association (tel: 0569-84-1007).



Mixed Paper

Accepted locations

Waste Collection Site in Each Area

Chita-nanbu Recycling Station

Rules

Waste Collection Site in Each Area - Page 3

Chita-nanbu Recycling Station - Page 8

Items should be contained within the town's designated trash bag and disposed of on the collection day for mixed paper. Items can be put out for collection even on rainy days.

Items can be taken directly to the Chita-nanbu Recycling Station. Please use the town's designated trash bag. Items can be brought in even on rainy days.



• Mixed papers refers not only to (snack boxes, etc.) packaging with the 紙 symbol, but also flyers, paper wrappers, photos, (windowed) envelopes, paper bags, note pads, etc.

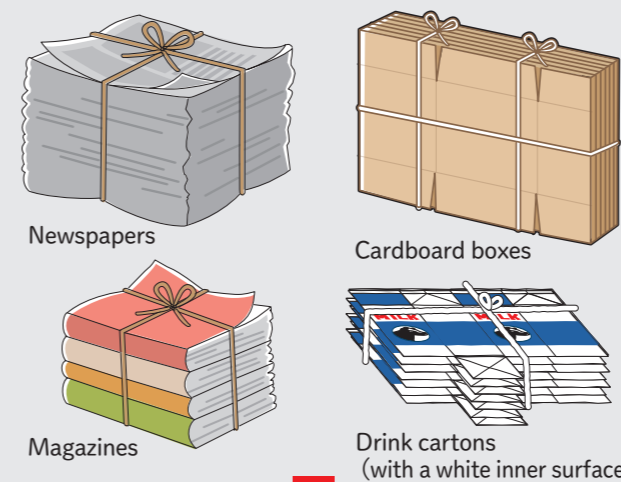
*Receipts and delivery slips that use carbon paper, calendars, posters, etc., made of overcoating paper or synthetic paper also falls under this category.

*Documents secured using staplers/clips or flyers enclosed within plastic bags can also be disposed of as it is.

What are papers that do not fall under this category?



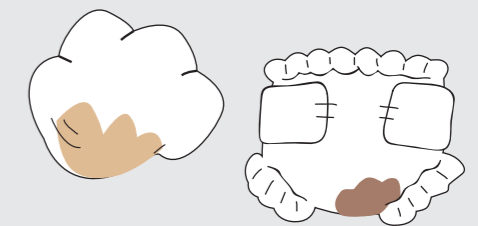
Recyclables



Please dispose of it either at your area's **sorting site** or bring it to the **Chita-nanbu Recycling Station**.

Soiled Paper

- Soiled paper - used tissues, disposable diapers, etc.
- ***See page 9 for information on disposable diapers.**



Disposed of as **combustible (burnable) waste**.

Does not fall under this category as it may stain other recyclable items.

Plastic Container and Packaging

Oversized Combustible (burnable)/Incombustible (non-burnable) Trash

Accepted locations

Waste Collection Site in Each Area

Chita-nanbu Recycling Station

Accepted locations

Chita-nanbu Clean Center (Transfer Station)

Chita-nanbu Regional Environmental Center

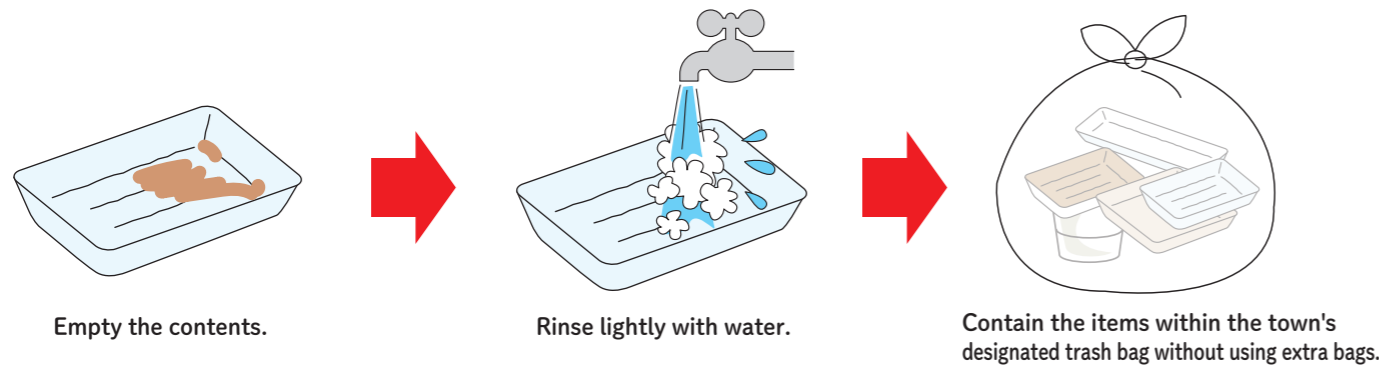
Rules

Waste Collection Site in Each Area - Page 3

Chita-nanbu Recycling Station - Page 8

Items should be contained within the town's designated trash bag and disposed of on the same collection day for mixed paper. Items can be put out for collection, even on rainy days.

Items can be taken directly to the Chita-nanbu Recycling Station. Please use the town's designated trash bag. Items can be brought in even on rainy days.



Items should not be contained within extra layers of plastic bags.

Handling fee would increase as it requires more time and effort to sort the waste.



Do not include items that are not categorized as plastic containers and packaging!

Should items that are not under this category be included, the entire bag will be treated as trash instead of recyclables. Hazardous waste can cause injury to workers and cause accidents at the processing facility.



Indicated with the  symbol

Plastic containers and packaging that are **no longer necessary** after the contents are used or removed.



✘ If the item is still dirty after rinsing, please dispose of it as combustible (burnable) waste.

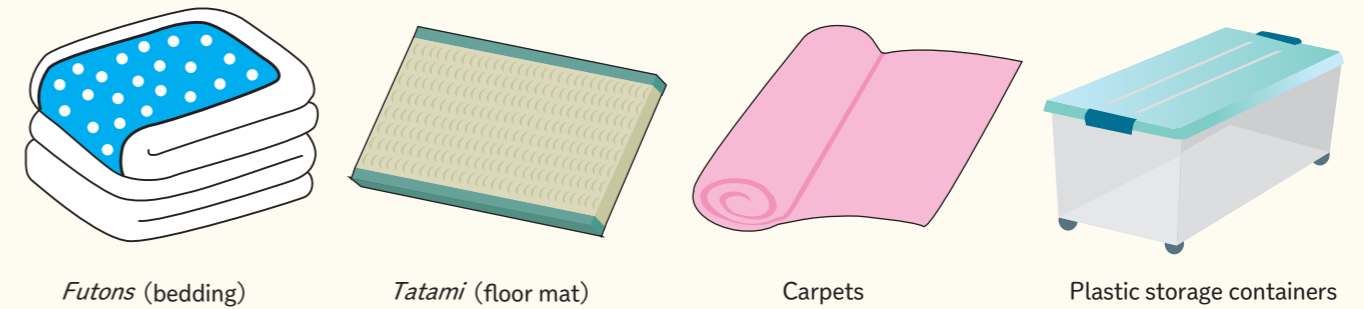
Rules

Chita-nanbu Clean Center (Transfer Station) - Page 5

You may also do a self drop off at the Chita-nanbu Regional Environmental Center in Taketoyo Town.

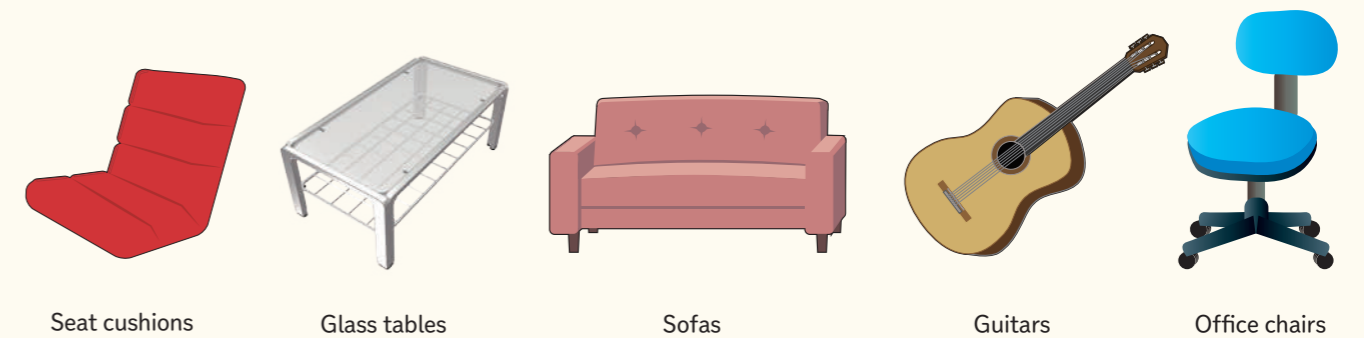
List of Oversized Combustible (burnable) Trash

Dimensions not exceeding 250 cm in height x 150 cm in width x 100 cm in length. ***For wood, it has to be 20 cm or below in diameter.**



List of Oversized Incombustible (non-burnable) Trash

Dimensions not exceeding 200 cm in height x 150 cm in width x 100 cm in length.



- There will be a handling fee of **100 yen for every 10 kg.**
 - Trash under this category is processed by the **Chita-nanbu Regional Environment Association**. Oversized wooden items and oversized recyclables processed by the **Chita-nanbu Hygiene Association** (see page 13) are **weighted separately**.
 - Oversized combustible (burnable)/incombustible (non-burnable) trash and oversized wooden items/oversized recyclables are **calculated separately**. (In case of combined drop-off, weighing and payment will be done twice).
 - Items **will not be accepted** if they are not sorted or exceeds the indicated dimensions.
 - Items **may not be accepted** depending on the **material or shape**.
- For more information, please contact the Chita-nanbu Regional Environment Association (tel: 0569-84-1007).



Oversized Wooden Item/Recyclable

Accepted locations

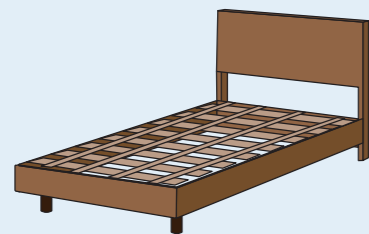
Chita-nanbu Clean Center (Interim Storage Facility)

Rules

Please bring it directly to the Chita-nanbu Clean Center (Interim Storage Facility) - Page 6

List of Oversized Wooden Items

Dimensions not exceeding 250 cm in height x 150 cm in width x 100 cm in length.



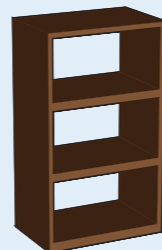
Bedframes



Wooden tables



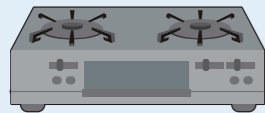
Wooden dressers



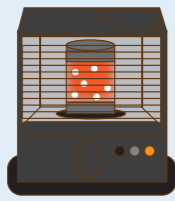
Wooden bookshelves

List of Oversized Recyclables

Dimensions not exceeding 200 cm in height x 150 cm in width x 100 cm in length.



Gas stoves



Kerosene heaters



Vacuum cleaners



Umbrellas



Bicycles

- There will be a handling fee of **100 yen for every 10 kg**.
- Trash under this category is processed by the **Chita-nanbu Hygiene Association**. Oversized combustible (burnable)/Incombustible (non-burnable) trash processed by the **Chita-nanbu Regional Environment Association** (see page 12) are **weighted separately**.
- Oversized combustible (burnable)/incombustible (non-burnable) waste and oversized wooden items/oversized recyclables are **calculated separately**. (In case of combined drop-off, weighing and payment will be done twice).
- Items **will not be accepted** if they are not sorted or exceeds the indicated dimensions.
- **Remove the cloth/vinyl material** from the umbrella before disposal.
- **Exhaust all contents** before disposing of the stoves.
- Items **may not be accepted** depending on the **material or shape**.
For more information, please contact the Chita-nanbu Hygiene Association (tel: 0569-62-0402).



Landfill Waste

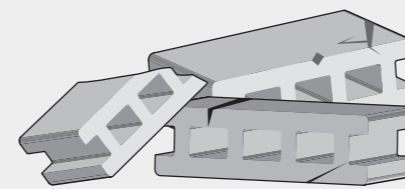
Accepted locations

Chita-nanbu Clean Center (Interim Storage Facility)

Rules

Please bring it directly to the Chita-nanbu Clean Center (Interim Storage Facility) - Page 6

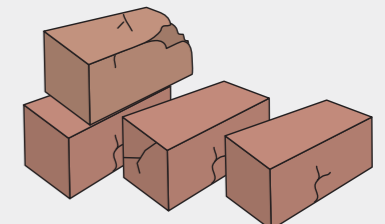
Landfill Waste *Not accepted in large quantity.



Concrete blocks



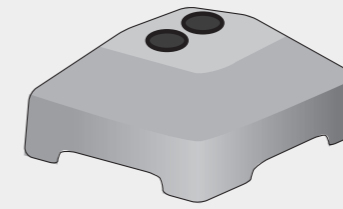
Roof tiles



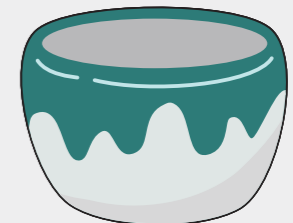
Bricks



Bowling balls



Pole bases



Earthenwares

- There will be a handling fee of **100 yen for every 10 kg**.
- Acceptable size is generally up to two concrete blocks with the total dimensions of **40 cm x 40 cm x 20 cm**.
- Weight of the drop off should be kept within half of a lightweight truck's load capacity (**around 175 kg**). **Repeated drop off is not allowed**.
- Scrap materials used in **constructions or reforms (including DIY made using heavy machinery and specialized equipment)** are not accepted.
- Items such as plasterboard that **contains gypsum** are not accepted, as **toxic gas (hydrogen sulphide)** may be emitted during the landfill process.
- Items **may not be accepted** depending on the **material, shape or drop off quantity**.
For more information, please contact the Chita-nanbu Hygiene Association (tel: 0569-62-0402).



Disposal of unwanted garden soil and stones

- While unwanted soil and stones from gardens and backyards are not categorized as [trash] due to their organic nature, they are accepted at the indicated locations if the above requirements are met.

Recyclable

Accepted locations

Sorting Site in Each Area

Chita-nanbu Recycling Station

Rules

Sorting Site in Each Area - Page 4

Chita-nanbu Recycling Station - Page 7

Please bring it to your area's sorting site during the allocated duration. However, papers and fabrics cannot be put out on rainy days as getting them wet will hinder the recycling process.

Can be taken directly to the Chita-nanbu Recycling Station. All items can be brought in even on rainy days.

Bottles (for drinks, cosmetics)



- Pour out the contents and rinse lightly.
- **Crown caps**, etc., falls under the [others (metals)] category.
- Bottles used for **agricultural chemicals and chemical agents** fall under the [others (glass, ceramics and porcelain wares)] category.

Papers, Fabrics

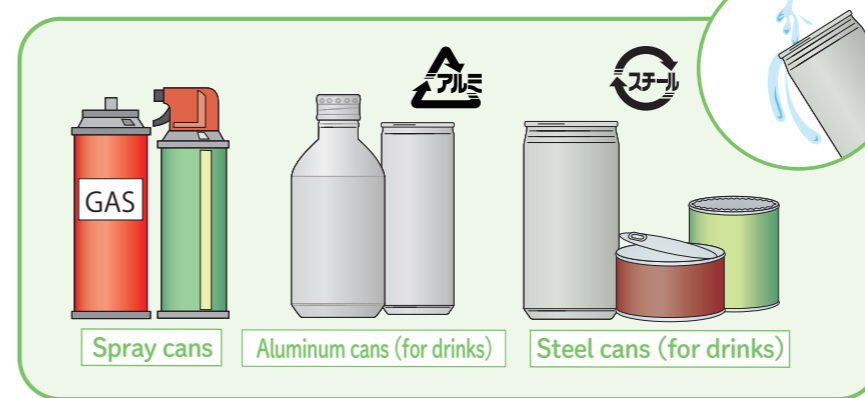


- Flyers can be disposed of along with newspapers.
- Clasps, duct tapes, wrappers, etc., used for cardboard boxes should be removed before disposal.
- Clothes should be washed before disposal. Unwashed clothes can be disposed of as combustible (burnable) waste.
- Workwears and traditional Japanese clothing should be disposed of as combustible (burnable) waste.
- Only drink cartons with white inner surfaces are recyclable. Rinse, cut open and dry before disposal.
- Drink cartons with inner foil lining (aluminum) are not recyclable and should be disposed of as Mixed Paper.
- Papers and fabrics should be of a carryable size and tied criss-cross with a rope or string before being disposed of at your area's sorting site.

If it rains, please hold on to the next collection day.

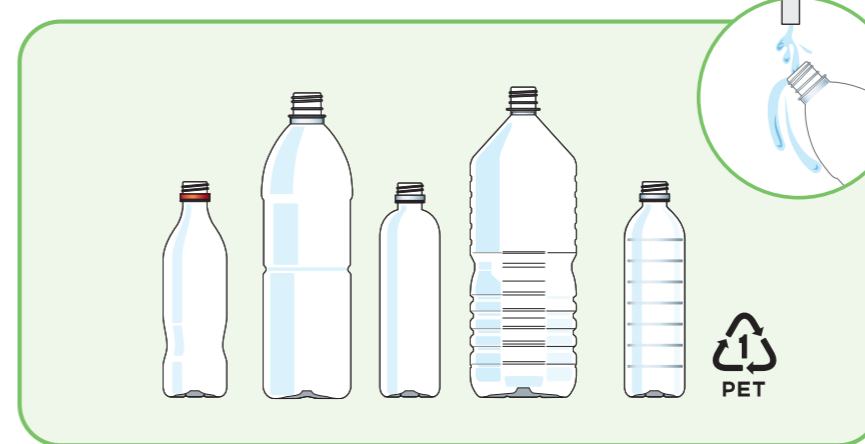
- Papers and fabrics can be brought into the Chita-nanbu Recycling Station even on rainy days. In addition, clothes do not have to be secured with a rope or string during disposal.

Cans



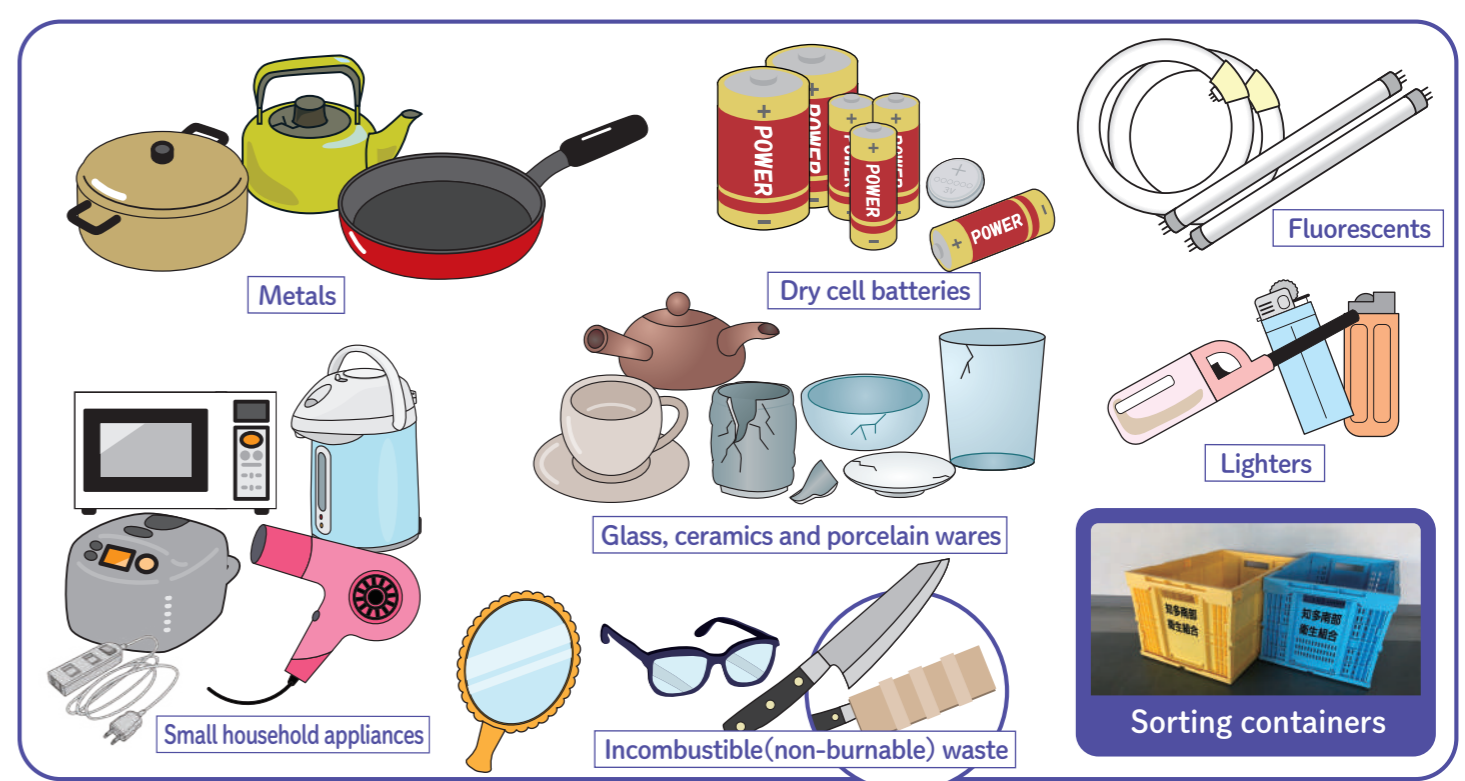
- Exhaust or empty spray cans and gas canisters before disposal, as they may cause fire or explosion during the processing phase. Opening up holes is unnecessary.
 - Empty out the contents from aluminum cans and steel cans, and give it a light rinse before disposal.
- Bottle caps are under the [others (metals)] category.**

Plastic bottles (for drinks)



- Only items with the logo falls under this category.
- Rinse the item before disposal.
- **Caps and labels should be separated and disposed of as [plastic container and packaging].**
- **Bottles used for water dispensers are not recyclable.** Please confirm with the seller or disposal of it as combustible (burnable) waste.

Others



- Exhaust the content from lighters before disposal, as they may cause fire during the processing phase.
- Small household appliances, **without disassembling the components**, have to fit within the sorting containers (30 cm in length x 40 cm in width x 35 cm in height). If the item does not fit within the sorting containers, it should be disposed of as an **oversized recyclable**.
- Composite products are considered as incombustible (non-burnable) waste. E.g. Eyeglasses - lenses (glass) + frames (plastic/steel).
- **For sharp objects such as knives, firmly wrap the blade portion with cloth or tapes.**

Grass, Pruned Branch, Bamboo

Accepted locations

Waste Collection Site in Each Area

Chita-nanbu Clean Center (Transfer Station)

Chita-nanbu Recycling Station

Rules	Waste Collection Site in Each Area - Page 3	Chita-nanbu Clean Center (Transfer Station) - Page 5	Chita-nanbu Recycling Station - Page 8
Bundle the items using the town's designated trash bag (45 liters) and dispose of it at your area's collection site as combustible (burnable) waste.	A handling fee of 100 yen per 10 kg would be required if brought directly to the Chita-nanbu Clean Center (Transfer Station) and is disposed of as combustible (burnable) waste.	There will be no handling fee if brought directly to the Chita-nanbu Recycling Station and is disposed of as recyclables.	

Reference image for disposal at the collection site

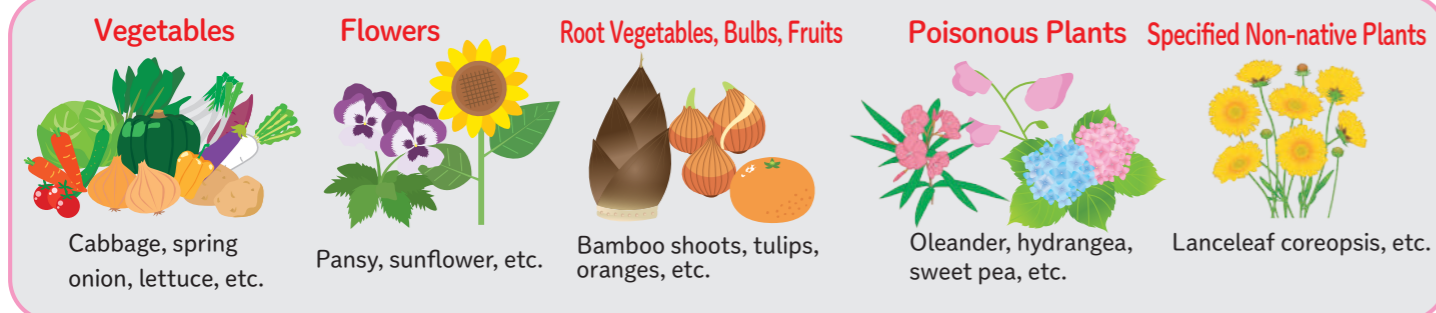


Things to take note of during drop off at the Chita-nanbu Recycling Station.



- Separate the items into their respective categories - [grass, leaves], [branches, trees], [bamboos, bamboo grass]. The recycling process cannot take place if they are not separated. In addition, make sure that combustible (burnable) waste or cans are not mixed in during disposal.
 - Snap off the branches when disposing of trees.
 - Drop off at the Chita-nanbu Recycling Station is limited to items that are within 180 cm in length and 15 cm in width (cross-section).
 - Vegetables and flowers are not recyclable as they contain a high level of moistures, which facilitates decomposition and releases foul odor. Please dispose of it as combustible (burnable) waste.
 - Botanical plants may not be accepted depending on their species.
- For more information, please contact the Chita-nanbu Hygiene Association (tel: 0569-62-0402).

Items that are not accepted (disposed of as combustible (burnable) waste).

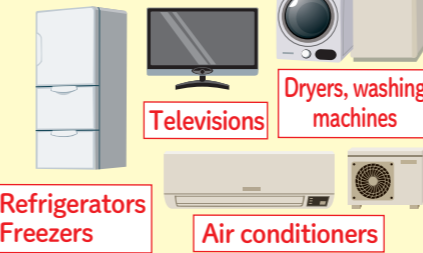


Items not accepted

★ Items not accepted are listed below. For confirmation on the disposal method, please inquire with either the Chita-nanbu Hygiene Association or your town hall's Environment Division.



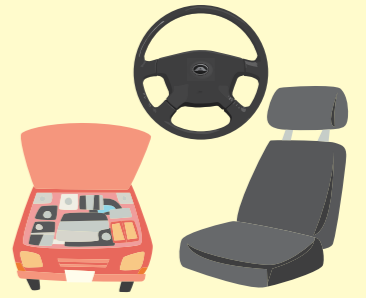
Major Household Appliances



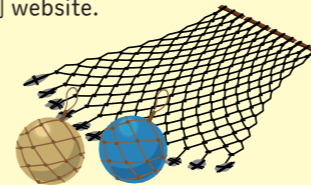
For items that are listed in Japan's [Home Appliance Recycling Law], please consult your local appliance retailer or look into appliance replacement services. For more details, check out the official [Association for Electric Home Appliances of Japan] website.



Please consult with your local retailer or a disposal service provider.



Car parts, attachable are not accepted. Please consult with your local dealer.



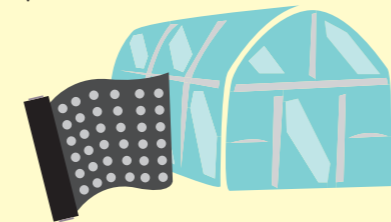
Industrial wastes generated by the fishing industries are not accepted. Please consult with either the fishery association or a disposal service provider.



Items made of FRP (fiber reinforced plastics) are not accepted.



Pachinko, slot machines, used in households are not accepted.



Industrial wastes generated by the agriculture industries are not accepted. Please consult with either the agriculture center or a disposal service provider.



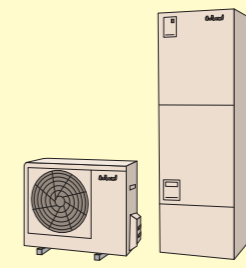
Items such as fireproof safes, which are difficult to process, are not accepted. Please consult with your local retailer.



Items that use piano wires, which are difficult to process, are not accepted. Please consult with your local retailer.



Engine powered machines are not accepted. Please consult with your local retailer.



Electric water heaters are not accepted. Please consult with your local retailer.



Construction waste materials (both business and private use) are not accepted.

Illegal dumping is a crime

- If illegal dumping happens on your property, report it to the police and consult your town hall's environment division before clearing the trash.
- Regardless of whether the incident was reported, if the perpetrator can not be found, the property owner will have to dispose of the trash.
 - ※ In compliance with the Waste Management and Public Cleansing Law (Fifth Article)
 - ※ Reporting the crime does not mean that the police or your town hall's environment division will help with the disposal process.

